

Make A  
Lasting Impression



EVERLAST®

*Advanced Composite Siding*



## Time to Love Your Home...for Life

Nothing on the market compares to Everlast siding or the value it provides homeowners. Imagine your home beautifully clad in upscale natural cedar, but with none of the hassles and maintenance costs associated with real wood, engineered wood, or fiber cement. Envision never having to paint your home again. Visualize your siding decades from now, remaining as pristine as the day it was installed. Imagine ultimate peace-of-mind with the industry's best transferable limited lifetime warranty, including fade protection.

What you imagine is Everlast — the only siding that lets you love your home...for life.





Everlast® Lap Siding  
Everlast® Board & Batten Siding  
Cabernet Red





## Material Science Meets Unparalleled Artistry

A technological breakthrough in material science, Everlast siding features C CORE® mineral-enriched composite substrate that is virtually impervious to siding's #1 enemy – water. To this remarkable substrate, an advanced UV-resistant acrylic capstock is molecularly fused and then embossed with the actual grain pattern of rough-sawn top-grade cedar, producing Everlast's **CedarTouch®** finish, the most authentic on the market.







## Unlike real wood, engineered wood, and fiber cement siding:



Everlast siding forever eliminates painting and caulking



Everlast siding is virtually impervious to water



Everlast siding is highly resistant to fading and discoloration



Everlast siding never bows, warps, splits, or swells



Everlast siding is insect-resistant



Everlast siding is ideal for wet and harsh climates

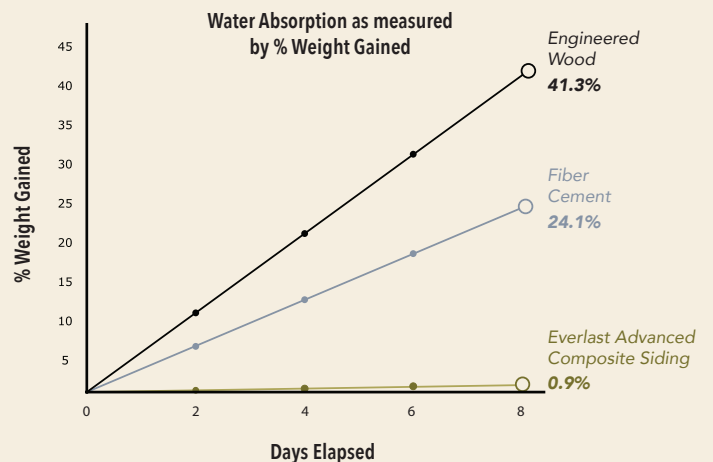


Everlast® Lap Siding  
Flagstone



## Siding's #1 Enemy is Simply No Match For Everlast

Testing to compare Everlast siding's water absorption rate compared to engineered wood and fiber cement reveals a dramatic difference. Everlast's absorption rate is negligible, while engineered wood and fiber cement require diligent maintenance to achieve effective moisture protection.



Everlast® Lap Siding  
Sand Dune



Everlast® Lap Siding  
Everlast® Board & Batten Siding  
Saddle Wood



# EVERLAST LAP SIDING

## Timeless Clapboard-Style Appeal

Traditional clapboard siding has never gone out of style. Available in two reveals to accommodate regional and personal preferences, your home will reflect classic style, luxury, and comfort decade after decade. Choose Everlast Lap Siding exclusively, or with Everlast Board & Batten.





# COLORS

Harbor Blue

Blue Spruce

Willow

Spanish Moss

Antique Ivory

Sand Dune

Misty Taupe

Chestnut

Saddle Wood

Seaside Grey

Slate

Flagstone

Storm Grey

Cabernet Red

Natural White

## Color Palette

The Everlast Lap Siding palette\* – including deep, rich hues – has been thoughtfully curated by color consultants to complement any style of home, regional preference, as well as both current and classic color trends.

NOTE: Colors may not be exactly as shown due to printing limitations.  
Consult a product sample before final selection.

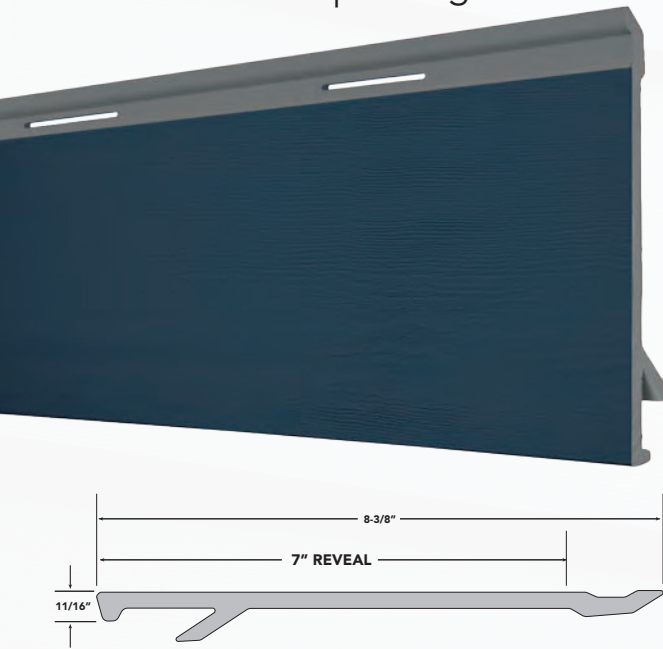
\* Please contact your Everlast dealer for product availability.



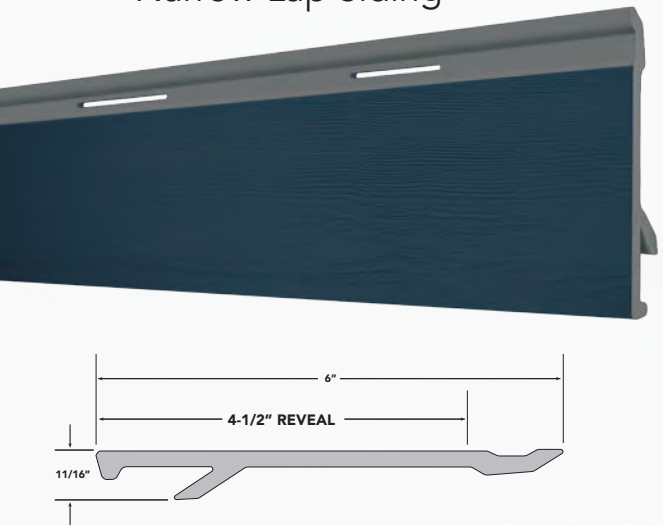
# LAP SIDING

TWO REVEALS AVAILABLE FOR YOUR IDEAL HOME

Standard Lap Siding



Narrow Lap Siding





## Engineered to Withstand High Winds and to Help Ensure Ease of Installation



Everlast Lap Siding's EZStack interlocking jointery prevents siding from rattling in high wind conditions, while enhancing the siding's ability to withstand high wind forces, ensuring that your siding remains firmly affixed. EZStack jointery also assists installers by helping to ensure that your siding is perfectly level and spaced for optimal aesthetics.

## Enjoy the Tightest, Most Discreet Seams on the Market



Each Everlast Lap Siding plank-to-plank seam is reinforced with a stainless steel bracket to produce the strongest, longest lasting, and best looking seams on the market. Even better, no caulking or flashing at seams is ever required.

With fiber cement and engineered wood, thermal expansion and contraction causes siding seams to open and close throughout the year. Caulking these seams only provides a temporary fix. And unsightly joint caps are no solution.





Everlast® Board & Batten Siding  
Everlast® Lap Siding  
Chestnut



# EVERLAST BOARD & BATTEN

## Contemporary Rustic Charm

Choose Everlast Board & Batten to give your home rustic, yet highly contemporary, appearance. Use Everlast Board & Batten exclusively, or combine with Everlast Lap Siding.

Blue Spruce

Sand Dune

Misty Taupe

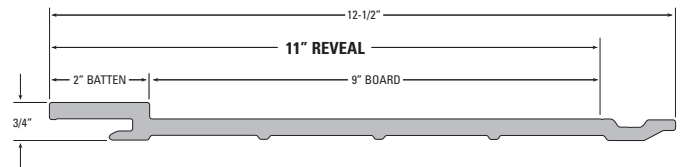
Chestnut

Saddle Wood

Seaside Grey

Flagstone





## Efficient One-Piece Design

Unlike other board and batten siding products that require two pieces – both a board and a batten – Everlast Board & Batten combines these two pieces into one, to eliminate unsightly fasteners and to help ensure top quality installation.

# NEW SIDING

## Color Palette

The Everlast Board & Batten palette\* features many of the same hues as Everlast Lap Siding and complements any style of home, regional preference, as well as both current and classic color trends.

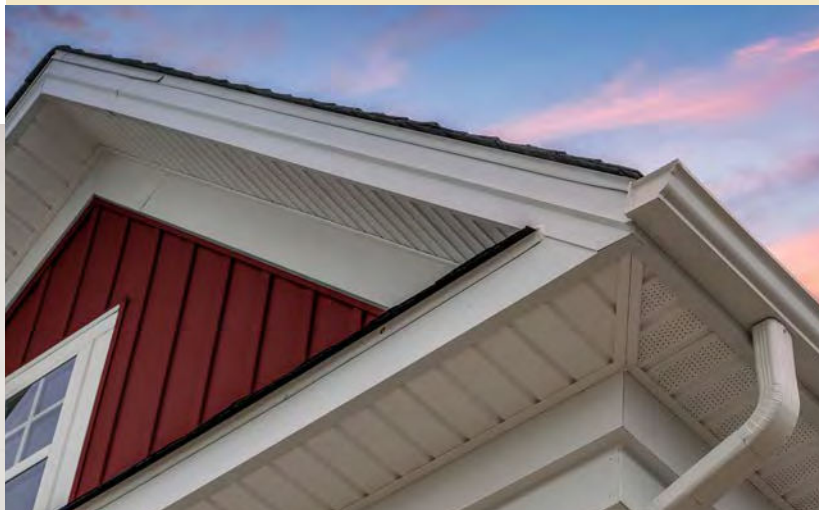
NOTE: Colors may not be exactly as shown due to printing limitations. Consult a product sample before final selection.

\* Please contact your Everlast dealer for product availability.

Storm Grey

Cabernet Red

Natural White



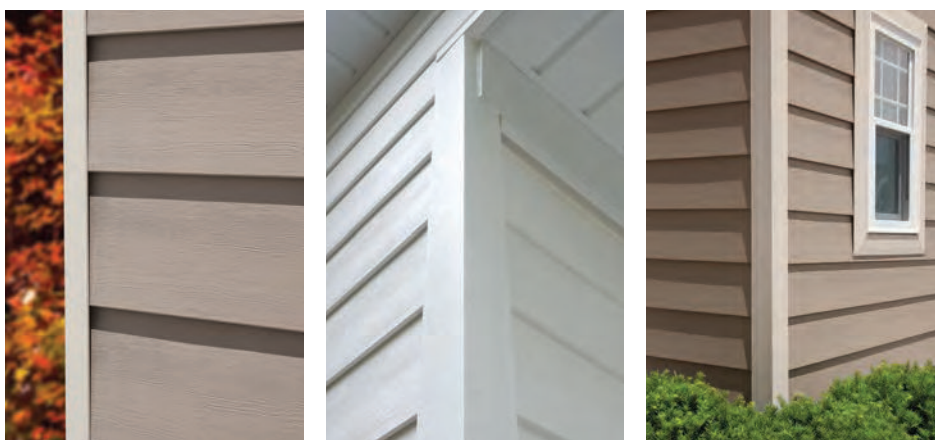




# PREMIUM COLOR-MATCHED

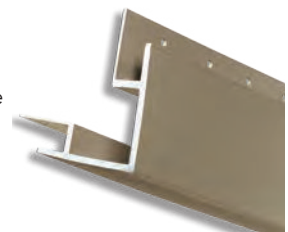
## The Finest Trim for the Finest Siding

Nothing matches the beauty and durability of Everlast Premium Color-Matched Trim. Made from the very same advanced material as Everlast siding, even your home's trim will last a lifetime, without the hassle and cost of recurring maintenance.



NOTE: An optional all-white cellular PVC trim package, fully compatible with Everlast siding, is also available. See [www.EverlastSiding.com](http://www.EverlastSiding.com) for more details.

3 1/2" Outside  
Corner Post



3 1/2" Lineal



1 1/2" J-Channel

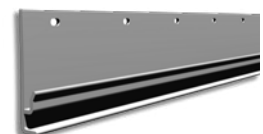


Perimeter 1 1/2" Trim  
with Trim Receiver



### RIGID PVC ACCESSORY

Starter Strip  
(Grey only)







# TRIM

Everlast® Lap Siding  
 Premium Color-Matched Trim  
 Blue Spruce

## Color Palette

Everlast Premium Color-Matched Trim is available in all Everlast siding colors.\*  
 Explore beautiful shades to match or contrast with your Everlast siding.

NOTE: Colors may not be exactly as shown due to printing limitations. Consult a product sample before final selection.

\* Please contact your Everlast dealer for product availability.



Everlast® Lap Siding  
 Premium Color-Matched Trim  
 Natural White



# COLOR STRATEGIES

Explore these popular color strategies for both siding and trim.

## Complimentary Colors

Two complimentary Everlast colors, Blue Spruce and Seaside Grey, combine beautifully with Everlast Color-Matched Trim in Natural White.



## Shade Variation

Dark brown Everlast Saddle Wood is tastefully paired with lighter Chestnut, while Everlast Color-Matched Trim in Misty Taupe completes the effect.



## Single Accent

Everlast Color-Matched Trim in Antique Ivory provides the perfect accent to Everlast siding in Cabernet Red.



## Monochromatic

Sand Dune in both Everlast siding and Color-Matched Trim produces a modern aesthetic and allows other architectural features to be accentuated.





## Enjoy the Ultimate Peace of Mind and More

With a siding system as superior as Everlast, it's easy to understand why it's backed by the industry's best, most comprehensive residential siding warranty. With Everlast, you get peace of mind from a limited lifetime manufacturer's warranty, courtesy of Chelsea Building Products. This comprehensive warranty also provides fade protection. Plus, should you sell your home, your Everlast warranty is transferable to the new owner, further enhancing resale value.



Visit [www.EverlastSiding.com](http://www.EverlastSiding.com) for complete warranty details.

Everlast® Board & Batten Siding  
Everlast® Lap Siding  
Misty Taupe

## The Environmentally Responsible Choice

Environmentally conscious homeowners should know that Everlast siding is manufactured with vastly lower energy consumption compared to other siding options such as fiber cement. And wood and engineered wood siding contribute to the depletion of vital forestry resources. Plus, Everlast siding permanently eliminates the need for paints, stains, caulking, and solvents which contain harmful VOCs. And, at the end of its extremely long service life, Everlast siding and trim are fully recyclable. Clearly Everlast siding is a far more sensible choice for the planet.





**EVERLAST®**  
*Advanced Composite Siding*



[www.EverlastSiding.com](http://www.EverlastSiding.com)

Everlast® Call Center Support Line  
1-844-494-7920

Everlast® Advanced Composite Siding is a premium product proudly manufactured by Chelsea Building Products in the USA. Founded in 1975 and headquartered in Oakmont, Pennsylvania, Chelsea Building Products is a leading US manufacturer of exterior building products and components incorporating advanced composite materials.

Everlast®, C CORE®, and CedarTouch® are registered trademarks of Chelsea Building Products. All rights reserved.

Chelsea Building Products reserves the right to alter, modify, or discontinue items from time to time without notice.

All products made in the USA.



© 2021 Chelsea Building Products  
CBPEV-7-2021-HB



Everlast® Lap Siding  
Everlast® Board & Batten Siding  
Flagstone

#### **Building Code Compliance**

CCRR (Code Compliance Report) # CCRR-0201  
ASTM E84  
ASTM D635 (Class CC1)  
ASTM D-1929

DBPR (Florida Building Code) #FL22980

TDI (Texas Department of Insurance) #EC-107