

2021 PRODUCT CATALOG
TAMLYN[®]
FAMILY. VALUE. SERVICE.

WATER MANAGEMENT

WATER MANAGEMENT | XTREMEINTERIOR[™] | XTREMETRIM[®] | XTREMECOLOR[™] FLASHING | SIDING ACCESSORIES | VENTILATION | METAL FLASHING | CONNECTORS



TAMLYN[®]

FAMILY. VALUE. SERVICE.

TAMLYN was established in May 1971 by Ron Tamlyn, Sr. with \$800 borrowed money and help from his wife, Jean, in a small shed in the back yard of their modest home in Bellaire, Texas. From a small shed, TAMLYN became a multi-million dollar, international business with a product line to match. In 2017, Tom Tamlyn became CEO and Miguel Gonzales now leads TAMLYN as President. Our history is one of quality, innovation, and proven performance. We are proud to represent the manufacturing end of the building products industry, and remain a competitive manufacturer committed to making products in America, giving customers a choice and not putting all their eggs in an uncertain import basket. An overwhelming majority of our products are still made in the USA. We believe it matters in helping America keep control of its destiny.

TAMLYN®

FAMILY. VALUE. SERVICE.

TAMLYN® WATER MANAGEMENT SYSTEMS
WARRANTY INFORMATION

15 YEAR PRODUCT ONLY LIMITED WARRANTY

PRODUCTS COVERED

- TamlynWrap® Drainable Wrap
- TamlynWrap® ProSelect™ Commercial Wrap
- XtremeFlashing™ Tape
- XtremeSealant™
- XtremeSeam™ Tape
- Utility Moisture Flash
- TamlynWrap® RainScreen

R.H. Tamlyn & Sons, LP (Tamlyn®), warrants that the above products, when installed in accordance with the applicable Tamlyn® installation instructions, are free from manufacturing defects for fifteen (15) years from the date of purchase.

25 YEAR PRODUCT AND LABOR LIMITED WARRANTY

PRODUCTS COVERED

- TamlynWrap® Drainable Wrap
- TamlynWrap® ProSelect™ Commercial Wrap

Subject to the following specific terms and conditions, when installed as a system with all the Tamlyn® accessory products identified below;

- XtremeFlashing™ Tape
- XtremeSealant™
- XtremeSeam™ Tape

Tamlyn warrants TamlynWrap® Drainable Wrap and ProSelect™ Commercial Wrap will perform as designed for a period of twenty five (25) years from the date of purchase. The system shall be installed in strict accordance with the applicable Tamlyn® installation instructions in a properly constructed and designed wall system, following the applicable building codes and accepted industry standards for each type of structure. Project registration required.

WATER MANAGEMENT

TWC	ProSelect™ Commercial Wrap	5
TWD	TamlynWrap® Drainable Wrap.....	6
WS/ WSB/ XFB	XtremeFlashing™ Tape.....	7
XS265	XtremeSeam™ Tape	7
XS	XtremeSealant™	8
UMF	Utility Moisture Flash	8
PB	Tamlyn ProSeal™	9
TWR63	TamlynWrap® RainScreen 6.3.....	10
TWR101	TamlynWrap® RainScreen 10.1	11
CR	Corrugated Rainscreen	12
VST	Rainscreen Top Vent.....	13
VSZ	Vent Strip.....	13

As the building industry has advanced and enclosures have become more efficient and tighter, the ever present problem of moisture continues to plague projects. The infiltration of moisture can lead to structural deterioration, shorten the life of exterior claddings and paints, while also fostering mold and rot which will harm the structure and pose health hazards.

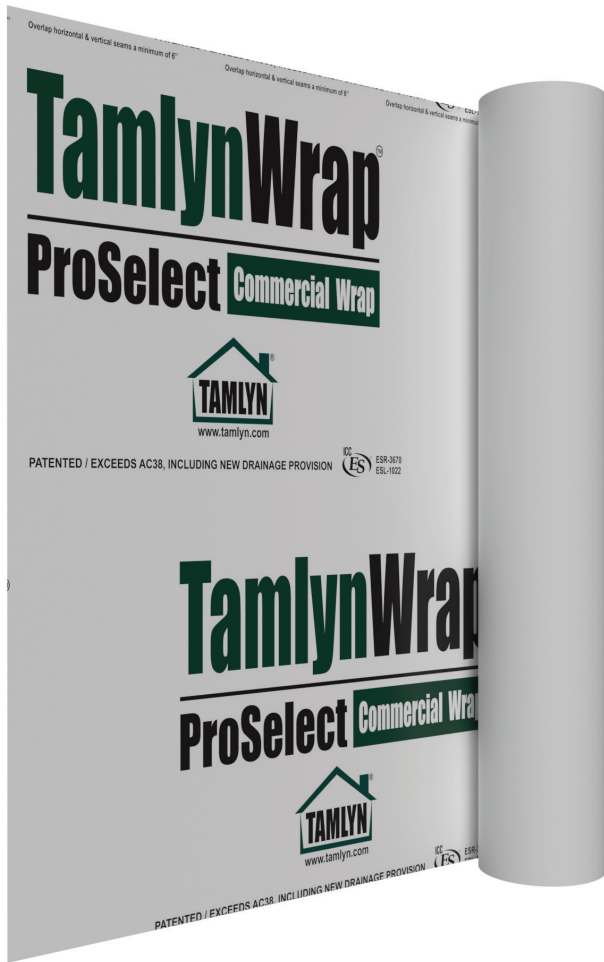
With these conditions, the key becomes the removal of liquid bulk water and water vapor as quickly as possible to avoid damage to structural components and this is where Tamlyn and its multiple options of Water Management Systems excels.

The key to building durable structures is more than just applying building paper or a wrap. It's about employing tried and proven water management principles to develop a moisture management system that addresses all the mechanisms of moisture movement. It is a guide for architectural design, product selection and construction practice. Preventing moisture damage and call backs is really about implementing a system to effectively control moisture as a liquid and as a vapor.

Tamlyn has worked with leading building science innovators to become a leader in providing multiple systems to facilitate proper water management.

These systems include TamlynWrap® Drainable Wrap, TamlynWrap® ProSelect™ Commercial Wrap and accessories as well as the Tamlyn vented rainscreen systems.

Refer to the published warranty information for specific terms, conditions and limitations that affect the above summarized warranties.



DESIGN FEATURES

When the project requires a strong and durable wrap, ProSelect™ is the choice for the professional builder. ProSelect™ is a high performance water and air resistive barrier product designed for the harsh conditions of a jobsite. ProSelect™ is made from multiple non-woven and barrier layers that provide superior durability, moisture and air infiltration protection.

In a convenient and easily handled 5 foot by 200 foot roll weighing only 25 pounds, ProSelect™ is easy to use at any level of the wall. This roll size facilitates the installation process at elevated heights and improves safety associated with wind events. ProSelect™ is unique in its development for focusing on improving building performance as well as the installation quality and safety.

VAPOR PERMEABLE (perm rating of 19)

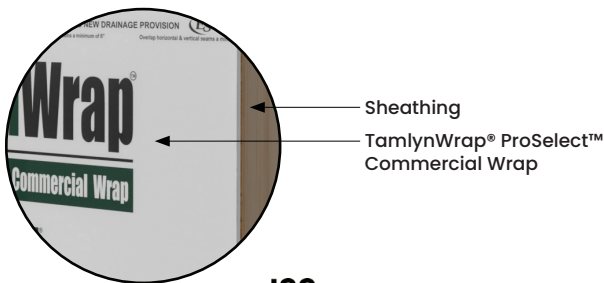
The vapor permeability facilitates drying of wall components and mitigates potential moisture accumulation as well as the damaging effects of mold and rot.

MEET ALL EXISTING CODE REQUIREMENTS

Meets or exceeds the ICC acceptance criteria requirements for water resistive barriers (AC38).

BEST PRACTICE

ProSelect™ must be installed SHINGLE FASHION and integrated with other wall components to promote positive mechanical drainage. All horizontal and vertical overlaps shall be 6" with 12" vertical overlap at any corners. Cap fasteners must be used for attachment per installation guidelines.



ITEM ID	TWC5X200
WIDTH	5 ft
LENGTH	200 ft
COVERAGE	1000 sf
ROLL WEIGHT	25 lbs
VAPOR PERMEANCE	19 perms
THICKNESS	0.3 mm
UV RATING	Maximum 270 days
WARRANTY	15-25 year limited
FIRE RATING	Class A

TWD

DESIGN FEATURES

TamlynWrap® Drainable Wrap is a unique moisture management product from Tamlyn. This innovative product combines a high performance Water Resistant Barrier (WRB) with a unique drainage pattern. Its unique design can remove 100 times more bulk water from a wall versus standard wraps.

DRAINS FASTER THAN OTHER DRAINABLE WRAPS

This is achieved through the gap created by 1.5 mm non-compressible spacers bonded to a high performance Water Resistance Barrier (WRB). This patented design provides a physical drainage space between the sheathing and cladding material.

CAN BE INSTALLED IN ANY DIRECTION

This patented technology is omni-directional which offers installation flexibility vs other options on the market.

VAPOR PERMEABLE (perm rating of 19)

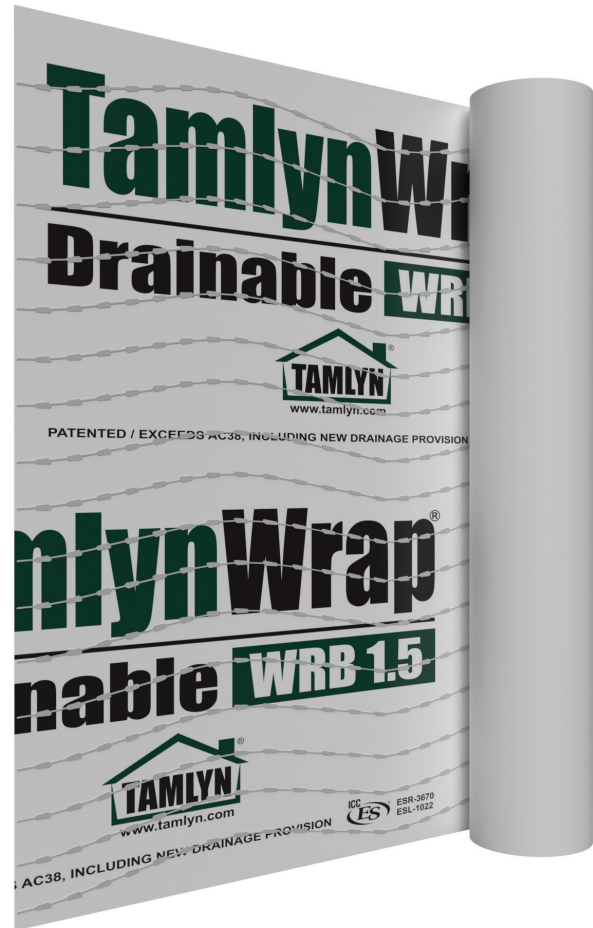
The vapor permeability facilitates drying of wall components and mitigates potential moisture accumulation as well as the damaging effects of mold and rot.

MEETS ALL EXISTING CODE REQUIREMENTS FOR DRAINABILITY

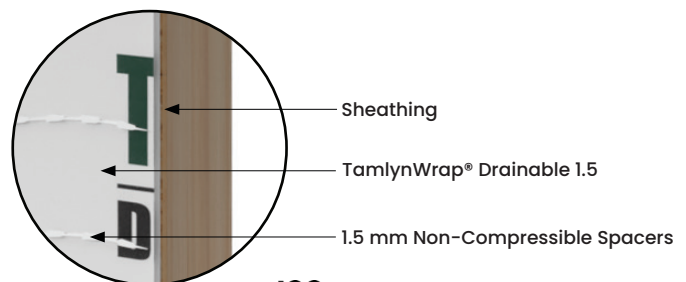
Meets or exceeds the ICC acceptance criteria requirements for water resistant barriers (AC308) and drainage efficiency.

BEST PRACTICE

TamlynWrap® Drainable Wrap must be installed SHINGLE FASHION and integrated with other wall components to promote positive mechanical drainage. All horizontal and vertical overlaps shall be 6" with 12" vertical overlap at any corners. All vertical seams shall be taped and cap fasteners used for attachment per installation guidelines.



ITEM ID	TWD5X100
WIDTH	5 ft
LENGTH	100 ft
COVERAGE	500 sf
ROLL WEIGHT	17 lbs
VAPOR PERMEANCE	19 perms
THICKNESS	1.8 mm
DRAINAGE GAP	1.5 mm
UV RATING	Maximum 120 days
WARRANTY	15-25 year limited
FIRE RATING	Class A



WS, WSB, XFB



WS (ASPHALT ADHESIVE)



WSB (BUTYL ADHESIVE)



XFB

DESIGN FEATURES

XtremeFlash™ is a self-adhering, self-sealing flashing tape designed for use around windows, doors, building seams and in general construction. It is composed of a polymer film that is coated with an aggressive Broad Temperature Spectrum (BTS™) asphalt or butyl based adhesive. A release liner protects the adhesive and is removed as the tape is installed.

The BTS™ adhesive self-seals around punctures caused by nails and staples. This advanced system bonds to all common building and window materials and seals around fasteners.

INTENDED USES

Provides a water tight seal that integrates with other wall components for water management around windows, doors and other wall penetrations such as pipes, electrical conduit, through wall flashing and other flashing details. Must be installed SHINGLE FASHION for proper moisture management.

XtremeFlex™ is designed for anytime a flexible flashing could be needed, ex. window sills, arched windows, and pipe or curved openings.

STORAGE LIFE

12 months in conditioned space

ITEM ID	WIDTH	LENGTH	THICKNESS
WS25-4	4"	75'	25 mil
WS25-4/100	4"	100'	25 mil
WS25-6	6"	75'	25 mil
WS25-6/100	6"	100'	25 mil
WS25-9	9"	75'	25 mil
WS25-9/100	9"	100'	25 mil
WS25-12	12"	75'	25 mil
WSB20-6	6"	75'	20 mil
WSB20-9	9"	75'	20 mil
XFB35-9	9"	75'	35 mil

XTREMESEAM™ TAPE

XS265

DESIGN FEATURES

A unique 2" x 65' double-sided acrylic blend tape for sealing horizontal and vertical overlaps. Essential for maintaining a proper seal between layers and for air barrier system performance. XtremeSeam™ Tape is durable material that has superior resistance to weather elements. XtremeSeam™ Tape exceeds industry requirements for splicing materials.

PRODUCT COMPOSITION

XtremeSeam™ Tape is a unique blend compound designed specifically to maintain seam integrity. XtremeSeam™ Tape maintains elasticity and splice integrity when subjected to severe ultraviolet rays, thermal shock, stagnant water, and extremely low-temperatures.



XS

DESIGN FEATURES

XtremeSealant™ is a paintable, fast-curing sealant formulated to exhibit superior adhesion and flexibility to a wide variety of substrates including: PVC, aluminum, glass, stainless steel, galvanized steel, wood, FRP, marble, stone and laminate substrates. XtremeSealant™ is a solvent-free, non-isocyanate adhesive/sealant. Conforms to ASTM C920, Type S, Grade NS, Class 25. AAMA 808.3 Specification for Exterior Perimeter Sealing Compound.

STORAGE LIFE

12 months, unopened containers in conditioned space.

PAINTABLE

Testing prior to painting is recommended.

PACKAGING

XtremeSealant™ is available in 300 ml (10.1 fl oz) tube and 24 tubes per carton.



UTILITY MOISTURE FLASH

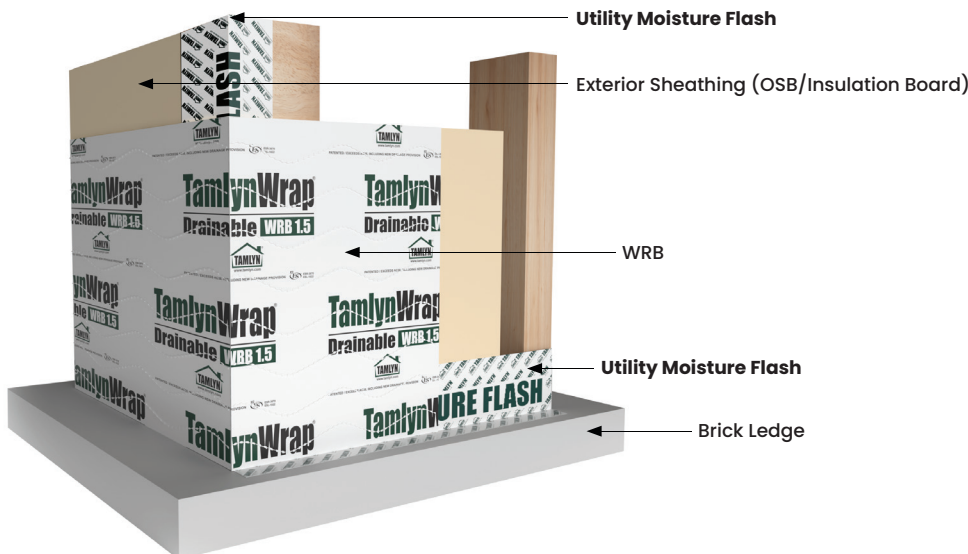
UMF

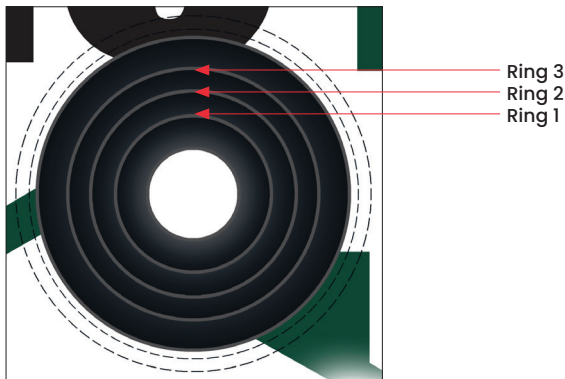
DESIGN FEATURES

Utility Moisture Flash is a heavy duty, flexible, tear-resistant, woven polypropylene nail-on flashing. Utility Moisture Flash was engineered to provide excellent durability when exposed to high ultraviolet rays and has the ability to withstand high winds. The cross woven design is to be mechanically fastened with capped fasteners. Easy to integrate with a water-resistant barrier, flashing and other wall components.

PACKAGING

12" Width x 120' Length, 20 rolls per box.





DESIGN FEATURES

TAMLYN ProSeal™ provides a lasting, economical solution to sealing various penetrations that come through a building's exterior walls. These seals are flexible and slide over pipe and HVAC penetrations to form an instant seal. Each unit also comes conveniently equipped with score lines to accommodate multiple sizes. The patented central seal is surrounded by a membrane which easily integrates into any building envelope system.

- Easy Installation
- Water-tight seal
- Score lines allow for multiple pipe sizes
- Breathable & Flexible
- Easily integrates into any building envelope system
- 15-year limited warranty

ITEM ID	SET AT	RING 1	RING 2	RING 3
PB-18-38	1/8" to 3/8"	N/A	N/A	N/A
PB-12-134	1/2" to 3/4"	1" to 1-1/4"	1-1/2" to 1-3/4"	N/A
PB-2-4	2", 3" SDR-35	3"	4" SDR-35	N/A
PB-4-6	4" SDR-35	4", 5" SDR-35	6" SDR-35	6"



STEP 1: Install TAMLYN Water Resistant Barrier (WRB). Cut an opening in the WRB using a utility knife for the protruding pipe.

Select appropriate ProSeal™ product and ring size to ensure a tight fit around penetration diameter.



STEP 2: Using a utility knife, cut a horizontal line in the WRB 2" directly above the penetration. The length of this cut will be slightly longer than the width of the TAMLYN ProSeal™.



STEP 3: Slide the TAMLYN ProSeal™ under the WRB cut while sliding the penetration through the TAMLYN ProSeal™ gasket. Make sure a minimum of 2" of the TAMLYN ProSeal™ is under the WRB and make sure the TAMLYN ProSeal™ fits firmly over the pipe.



STEP 4: Install XtremeFlashing™ Tape on each side of the TAMLYN ProSeal™ Next, install XtremeFlashing™ Tape across the top to seal the cut and covering side pieces completely. Use a hard roller or hand applicator to ensure proper adhesion.

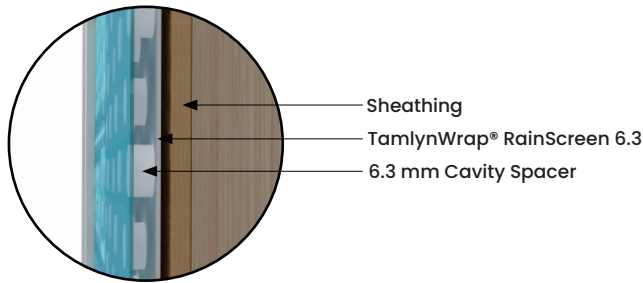
TWR63



DESIGN FEATURES

5' X 50' (250SF) gap spacing is 6.3 mm. The TamlynWrap® RainScreen 6.3 is a multi-layer water management system. This product is ideal for use over various substrates such as coated OSB and behind Stucco, Fiber Cement Board, Stone and Metal Panels. The 6.3 mm (1/4") thick cavity spacers are non-compressible and can act as a furring to promote enhanced drainage and drying capacity with improved installation efficiency.

ITEM ID	TWR63
WIDTH	5 ft
LENGTH	50 ft
COVERAGE	250 sf
ROLL WEIGHT	19 lbs
THICKNESS	6.7 mm
DRAINAGE GAP	6.3 mm
UV RATING	MAXIMUM 120 days
WARRANTY	15 year limited

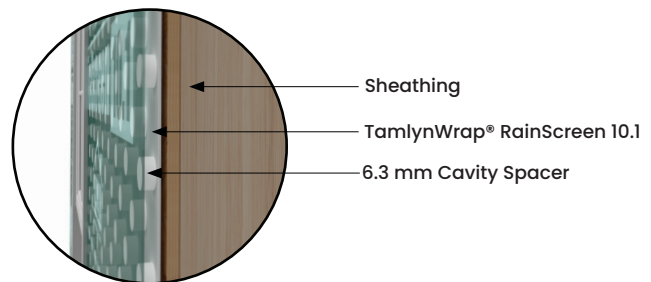


- Sheathing
- TamlynWrap® RainScreen 6.3
- 6.3 mm Cavity Spacer

DESIGN FEATURES

5' X 50' (250SF) gap spacing is 10.1 mm. The TamlynWrap® RainScreen 10.1 is a multi-layer water management system. This product is ideal for use over various substrates such as coated OSB and behind Stucco, Fiber Cement Board, Stone and Metal Panels. The 10.1 mm (3/8") thick cavity spacers are non-compressible and can act as a furring to promote enhanced drainage and drying capacity with improved installation efficiency.

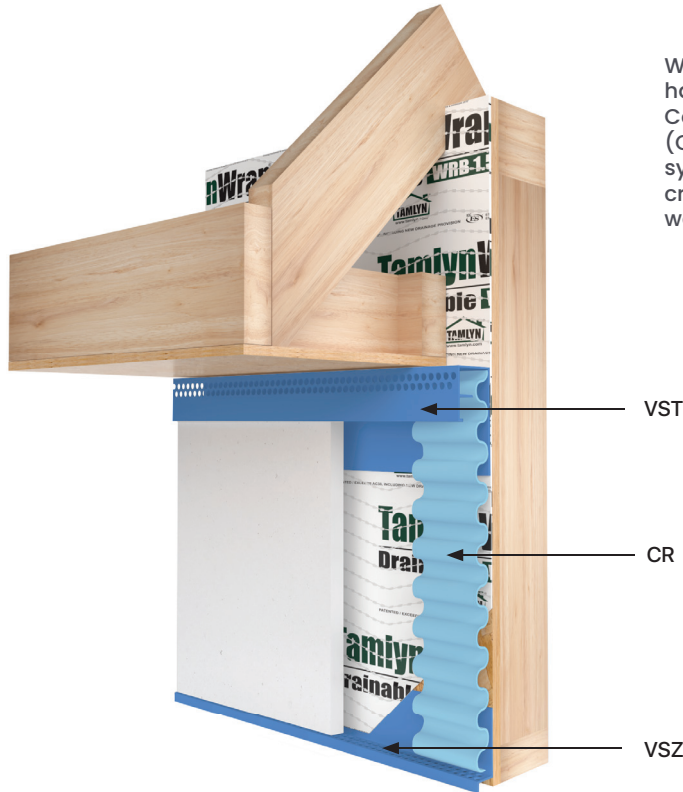
ITEM ID	TWR63
WIDTH	5 ft
LENGTH	50 ft
COVERAGE	250 sf
ROLL WEIGHT	22 lbs
THICKNESS	10.5 mm
DRAINAGE GAP	10.1 mm
UV RATING	MAXIMUM 120 days
WARRANTY	15 year limited



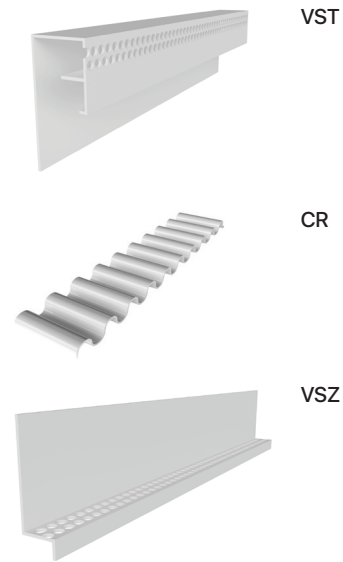
Sheathing

TamlynWrap® RainScreen 10.1

6.3 mm Cavity Spacer

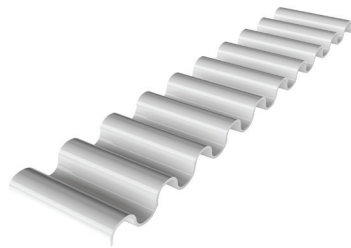


When design calls for a rainscreen system, Tamlyn has a solution with our Vented Rainscreen System. Comprised of the VST (Rainscreen Top Vent), CR (Corrugated Rainscreen), and VSZ (Vent Strip); this system provides a cavity space with both vertical and cross ventilation which will enable drying and liquid water removal.



CORRUGATED RAINSCREEN

CR



DESIGN FEATURES

An extruded PVC furring system that is 1-1/2" wide. Its flexible nature allows it to be rolled instead of being a strip, easing installation. The corrugated pattern allows for cross ventilation, and when combined with VSZ and VST, it creates a vented rainscreen.

Must be used together as a system with VST and VSZ.

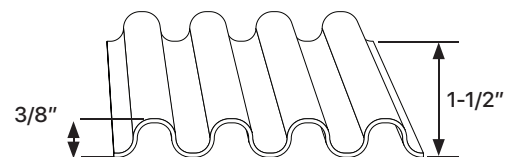
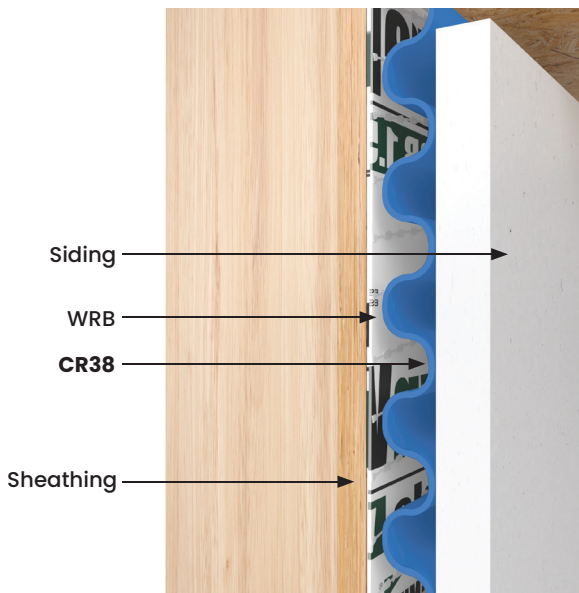
MATERIAL

Paintable white extruded rigid PVC, industry-standard, durable, chemically resistant product designed for outdoor weatherability.

PACKAGING

3 100' roll per Box

ITEM ID	RAINSCREEN SIZE	LENGTH
CR38	3/8"	300'



VST

DESIGN FEATURES

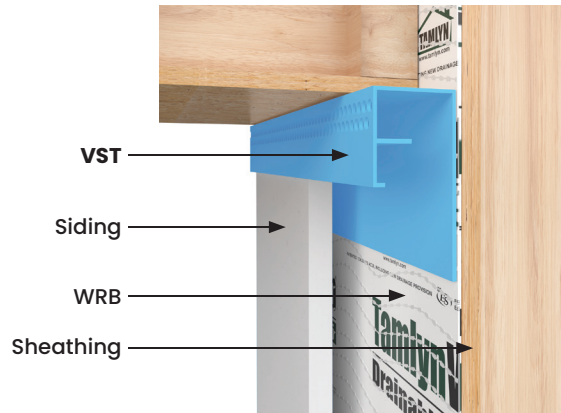
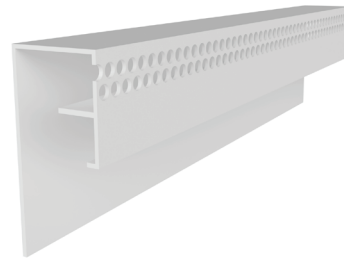
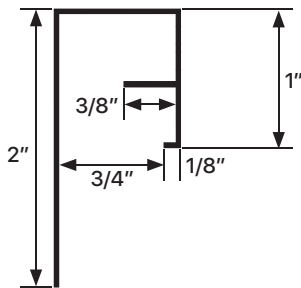
A top vent for a rainscreen which, when combined with VSZ, creates a vented rainscreen. Designed to fit 3/8" to 3/4" furring thicknesses. Perforated with 1/8" holes.

Must be used together as a system with CR and VSZ.

MATERIAL

Paintable white extruded rigid PVC, industry-standard, durable, chemically resistant product designed for outdoor weatherability.

ITEM ID	RAINSCREEN SIZE	LENGTH
VST	3/8"	8'



VENT STRIP

VSZ

DESIGN FEATURES

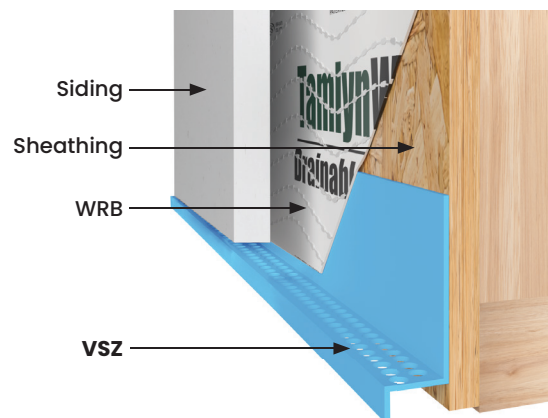
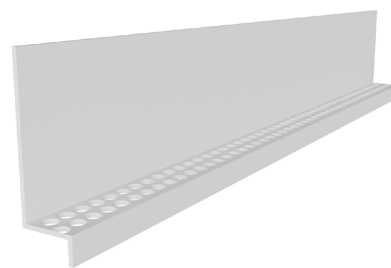
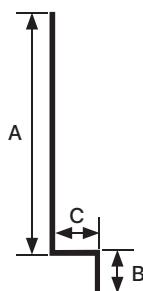
Starter course for ventilated rainscreen systems. Perforations allow for moisture to weep out while resisting pests from entering. Provides a vented rainscreen when matched with VST and designed for 3/8" to 3/4" furring thickness. Perforated with 1/8" holes.

Must be used together as a system with CR and VST.

MATERIAL

Paintable white extruded rigid PVC, industry-standard, durable, chemically resistant product designed for outdoor weatherability.

ITEM ID	A	B	C	RAINSCREEN SIZE
VST38	2"	3/8"	3/8"	3/8"
VST12	2"	3/8"	1/2"	1/2"
VST34	2"	3/8"	3/4"	3/4"



TAMLYN[®]

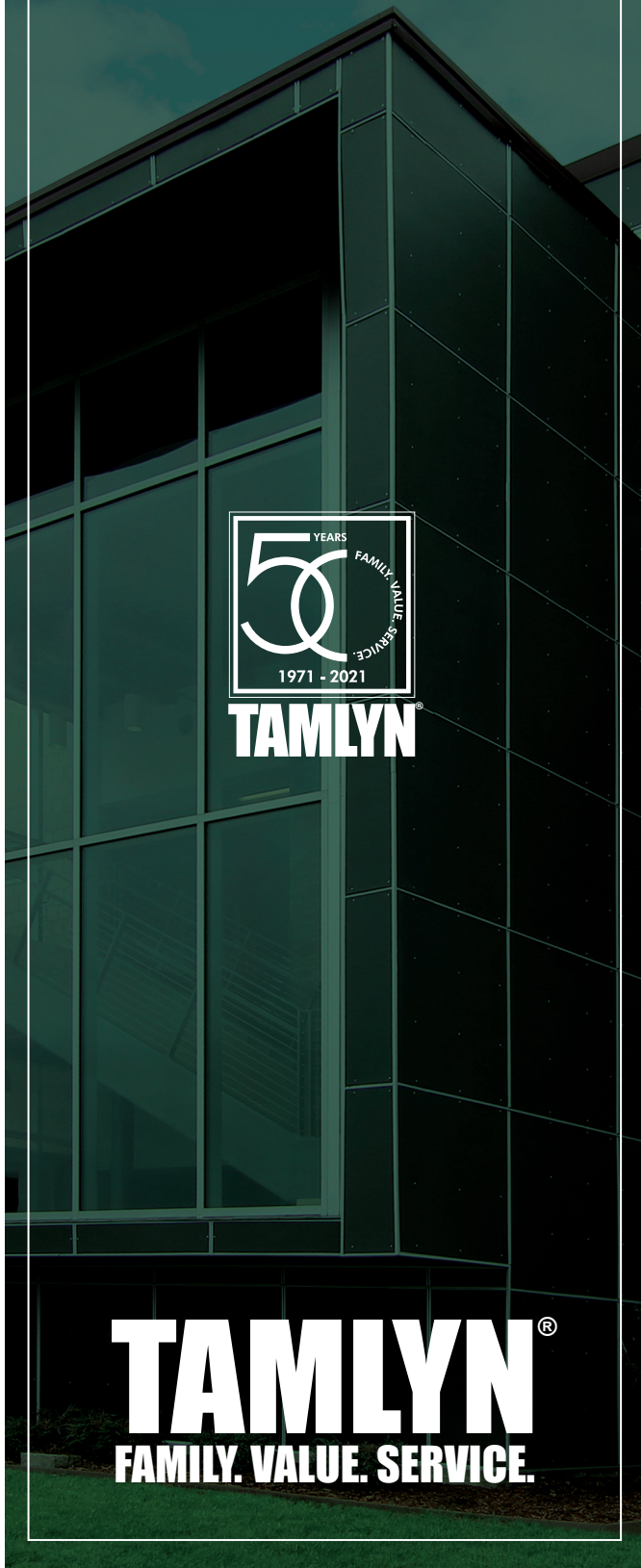
FAMILY. VALUE. SERVICE.



LOCATIONS

Houston
Dallas
Reno
Mexico City
Seoul
Sao Paulo
Edinburgh





TAMLYN Corporate Headquarters

13623 Pike Rd, Stafford, TX 77477

www.tamlyn.com | office: 800-334-1676 | info@tamlyn.com

WATER MANAGEMENT | XTREMEINTERIOR™ | XTREMETRIM® | XTREMECOLOR™ FLASHING | SIDING ACCESSORIES | VENTILATION | METAL FLASHING | CONNECTORS

Copyright © 2021 Tamlyn All Rights reserved.